



# ***MAHARAJA INSTRUMENTATION PVT. LTD***

***Plot No. 192 Street No. 2, R. K. Colony Nimbahera, Dist : Chittorgarh  
(Raj.) 312601***

***Mobile : +91-9828029755, 9214430286, Email : maharajamipl@gmail.com***

# **MAHARAJA INSTRUMENTATION PVT. LTD.**

**Electrical Engineers & Contractors**

## **INTRODUCTION**

MAHARAJA ENTERPRISES was established in 1987 under the partnership with the specific understanding to meet the demand of the growing cement projects in the field of erection and commissioning of electrical & instrumentation equipments. We are registered under the Electrical Inspectorate, Government of Rajasthan and Karnataka.

It has faced major competition in its domestic and industrial field leading to a sparkling success by supporting its customers with precise studied prices, fast service and most of all, providing its customers with grand trust.

### **ORGANIZATION**

The company's senior management team have an experience of 25 years in the field of erection and commissioning of Electrical and Instrumentation equipment in cement industries.

Maharaja Enterprises has its corporate headquarters at Nimbahera, Distt. Chittorgarh (Rajasthan) and has a team of energetic and dynamic professionally qualified engineers, supervisors, workforce having vast experience in carrying out the job perfectly.

### **OUR CREDENTIALS**

Precisely covering electrical and instrumentation fields simultaneously, we have successfully undertaken erection and commissioning of approximately 47 units of cement plants till date. Our qualified and experienced team enables our customers to turn over a concept to us and walk away from the project with the confidence that it will be completed in a timely and cost efficient manner.

### **INFRASTRUCTURE**

Our Registered Office Situated in Nimbahera, Distt. Chittorgarh ( Rajasthan ) in a well furnished office with necessary facilities, catering to all needs of office Management supported with commercial set up, along with the qualified and experience personnel required to all the sites add to the overall performance And now our Partnership firm will become a Private Limited company from January 2011 under the name of MAHARAJA INSTRUMENTATION PVT. LTD. (MIPL)

We have also recently established a panel manufacturing factory at Bhilwara, Ricco Industrial Area As a subsidiary unit under the name of Marcus Control & Automation from 2007.

# Executive Person

## OUR KEY PERSON

### *Technical Guideline*

**1 Shri. D. Ravisankar (Retired Sr. President J.K. Cement Group)**

**2 Shri.S.Khan (Retired Unit Head J.K. Cement Group)**

**1. Satish Kumar (Director)**

**2. Sagir Ahmed (Director)**

# Business Model –Key Partner

- ▶ Cement Plant



## ▶ Power Plant



## ▶ WHRS Plant



# Our Services

## Our Offered Services to you

Who are in extremely love with eco friendly system.



### Electrical Work

1. Electrical erection and commissioning
- 1.1 Cable tray fabrication and installation
- 1.2 Cable laying
- 1.3 Panel erection
- 1.4 Installation of various Electrical Equipment like transformer, Generators etc.
2. LT / HT Motor testing and commissioning
3. Erection and installation of street light poles with material or without material.
4. Manpower Supply



### Instrumentation Work

1. Erection and commissioning.
2. Instrument Calibration.
3. Instrument panels & Instruments – erection & commissioning.
4. Skilled and unskilled manpower supply.
5. PLC system installation and commissioning.
6. Lab Automation including Robo lab Erection under the supervision of M/s. FLS India Ltd, Chennai.



### Other work

1. Skilled and unskilled manpower supply
2. All types materials supply related to work.

# SCOPE OF WORK

## A.ELECTRICAL

1. Electrical erection and commissioning
  - (1) HT / LT Panel Installation Work.
  - (2) Installation of various Electrical Equipment like transformer, Generators etc.
  - (3) Cable tray fabrication and installation
  - (4) Cable laying HT/LT including Termination.
2. LT / HT Motor testing and commissioning
3. Erection and installation of street light poles with material or without material.
4. Manpower Supply

## B.INSTRUMENTATION

1. Erection and commissioning of all type of instrument panels.
2. Instrument Calibration.
3. All type of Instruments – erection & commissioning.
4. PLC system installation and commissioning.
5. Lab Automation/Including Complete Erection Work of Robo lab.
6. Installation of Cable tray / Cable laying and Termination work.
7. Skilled and unskilled manpower supply.



# Key Resources

## (A- Machinery)

S. No.	Description	Qty.
<b>1.</b>	<b>Lifting Equipments</b>	
	A. Hydra Crane 14 Ton Capacity	3 Nos.
	A. Hydra Crane 12 Ton Capacity	3 Nos.
	A. Farana 15 Ton Capacity	2 Nos
	A. Farana 23 Ton Capacity	1 Nos
<b>2.</b>	<b>Chain Block</b>	
	A. 10 Ton Capacity	6 Nos.
	A. 5 Ton Capacity	15 Nos.
	A. 2 Ton Capacity	15 Nos.
<b>3.</b>	<b>Welding Machine</b>	
	A. Rectifier Machine 450 Amp. Capacity	40 Nos.
	A. Welding Transformer 450 Amp. Capacity	155 Nos.
4.	Power Chopsa Machine	12 Nos.
5.	Power Drill Machine	40 Nos.
6.	Hand Drill Machine	125 Nos.
7.	Concrete Drill Machine	152 Nos.
8.	Pistal Drill Machine	28 Nos.
9.	Gas Cutting Sets	Sufficient Sets (As Per Site Requirements)
10.	A. Crimping Tools (Hydraulic Up to 400 sqmm Capacity)	26 Nos.
	B. Crimping Tools (Hydraulic Up to 630 sqmm Capacity)	22 Nos.
	C. Manual Type	12 Nos.
11.	Electronic Ferruling Machine	16 Nos.
12.	Digital Multi Meter	152 Nos.
13.	DC/AC Clamp Meter	125 Nos.
14.	Megger LT 500 Volts 100 MΩ	15 Nos.
15.	Megger HT 5000 Volts Digital	07 Nos.

## B- Details of Manpower

<u><b>Sr. Technical Dept.</b></u>			
1	Sadique Hussain	:	B.E. Instrument (Manager Technical) / 10 Years Exp.
2	Ashoka Das	:	B.E. (Instrument Engineer) / 15 Years Exp.
3	Abhishek Rai	:	B.E. (Electrical Engineer) / 6 Years Exp.
4	Dinesh Coudhary	:	D.E.E. (Electrical Engineer) / 10 Years Exp.
5	Arvind Kumar	:	B.E. (Electrical Engineer) / 7 Years Exp.
6	Arvind Singh Bhati	:	B.E. (Instrument Engineer) / 10 Years Exp.
7	Bhuvnesh Sharma	:	D.E.E. (Sr. Instrument Engineer) / 12 Years Exp.

<u><b>COMMERCIAL DEPT.</b></u>			
1	Mohd. Latif	:	B. Com. (Accounts Head)
2	Manish Prajapat	:	B. Com. (Accounts Officer)
3	A.V Ansari	:	(SR. Purchase Dept.)
4	Varsha Maratha	:	M. B. A. (HR Officer)
5	Shanti lal Nagda	:	B. Com. M.B.A. (Accounts Officer)
6	Nyati Mundra & Company Chittorgarh	:	C. A. (Our Tax Consultant)

**Technical Dept.**

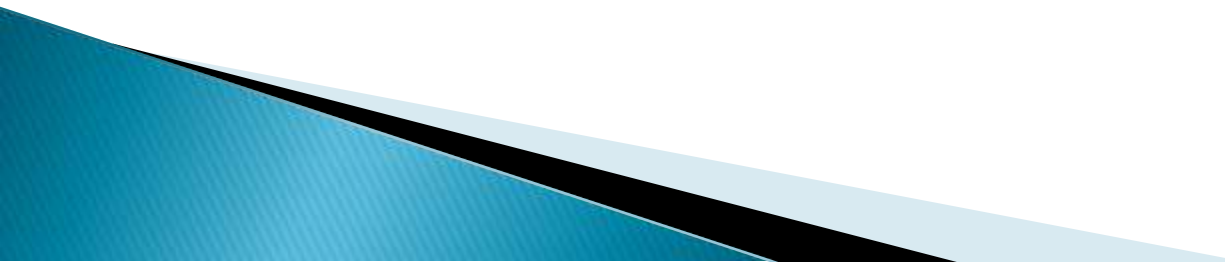
1	Sadique Hussain	:	B.E. Instrument (Manager Technical) / 10 Years Exp.
2	Ashoka Das	:	B.E. (Instrument Engineer) / 6 Years Exp.
3	Yaqub Ali	:	Sr. Supervisor / 25 Years Exp.
4	Abhishek Rai	:	B.E. (Electrical Engineer) / 6 Years Exp.
5	Vikas Vijaywargiya	:	B.E. (Electrical Engineer) / 5 Years Exp.
6	Dinesh Coudhary	:	D.E.E. (Electrical Engineer) / 10 Years Exp.
7	Ramesh Sharma	:	D.E.E. (Instrument Engineer) / 10 Years Exp.
8	Satish Parwat	:	D.E.E. (Electrical Engineer) / 7 Years Exp.
9	Sanjiv Sinha	:	B.E. (Electrical Engineer) / 8 Years Exp.
10	Sneh mohan bhattachariya	:	B.E. (Electrical Engineer) / 7 Years Exp.
11	Sunil kumar	:	B.E. (Electrical Engineer) / 6Years Exp.
12	Arvind Kumar	:	B.E. (Electrical Engineer) / 7 Years Exp.
13	Tejbhan Kushwaha	:	B.E. (Electrical Engineer) / 5 Years Exp.
14	Sanjoy Singh Mahaptra	:	B.E. (Electrical Engineer) / 5 Years Exp.
15	Devdata Maity	:	B.E. (Electrical Engineer) / 4 Years Exp.
16	Umar Khaiyyam	:	B.E. (Instrument Engineer) / 6 Years Exp.
17	Rohan G. Sapalya	:	B.E. (Instrument Engineer) / 5 Years Exp.
18	Arvind Singh Bhati	:	B.E. (Instrument Engineer) / 4 Years Exp.
19	Amar Sharma	:	B.E. (Instrument Engineer) / 4 Years Exp.
20	Sushil Kumar Singh	:	B.E. (Instrument Engineer) / 4 Years Exp.
21	Bhagwati Lal Sharma	:	B.E. (Electrical Engineer) / 4 Years Exp.
22	Bhuvnesh Sharma	:	D.E.E. (Sr. Instrument Engineer) / 5 Years Exp.
23	Pankaj Prajapat	:	D.E.E. ( Instrument Engineer ) / 5 Years Exp.
24	Kuldeep Singh	:	D.E.E. ( Electrical Engineer ) / 5 Years Exp.

25	Syyed Barbar Alam	:	D.E.E. (Sr. Instrument Engineer) / 5 Years Exp.
26	Sourabh mandal	:	D.E.E. (Sr. Instrument Engineer) / 4 Years Exp.
27	Shashikant Sharma	:	D.E.E. ( Instrument Engineer ) / 7 Years Exp.
28	Dashrath Vasu	:	Sr. Supervisor / 12 Years Exp.
29	Pradeep Sharma	:	Fabrication (Sr. Supervisor) / 25 Years Exp.
30	Munna Sharma	:	Fabrication (Supervisor) / 10 Years Exp.
31	Rajesh Mandal	:	Safety (Sr. Supervisor) / 20 Years Exp.
32	Om Prakash Gour	:	Sr. Supervisor / 15 Years Exp.
33	Surendra Kumar Menariya	:	Supervisor / 12 Years Exp.
34	Hari Om Sharma	:	Supervisor / 10 Years Exp.
35	Vipin Singh Rajput	:	Supervisor / 8 Years Exp.
36	Vinay Singh	:	Safety Supervisor / 6 Years Exp.
37	Ishwar Singh	:	Safety Supervisor / 5 Years Exp.
38	Rajmal Meghwal	:	Safety Supervisor / 5 Years Exp.
39	Surendra Singh	:	Safety Supervisor / 4 Years Exp.

**COMMERCIAL DEPT.**

1	Mohd. Latif	:	B. Com. (Accounts Officer)
2	Manish Prajapat	:	B. Com. (Accounts Officer)
3	Shanti lal Nagda	:	B. Com. M.B.A. (Accounts Officer)
4	Varsha Maratha	:	M. B. A. (HR Officer)
5	Rohit Kumar	:	B. Com. (Purchase Officer)
6	Chandra has Kumar	:	B. Com. (Purchase Officer)
7	Vipin Kumar	:	Store Incharge.
8	Nyati Mundra & Company Chittorgarh	:	C. A. (Our Tax Consultant)

# Value propositions :-

- High Quality Service
  - Dedicated post services  
(In terms Maintenance and O&M)
  - High Speed Work
- 

## Top Services

- Shree Cement Ltd
  - Ultratech Cement
  - J.K. Cement Works
  - Wonder Cement Ltd
  - Dalmia cement
  - Birla cement Works
  - Nuvoco Vistas Corp. Ltd
  - Udaipur Cement Ltd
  - ACC Cement Limited
  - Ambuja Cement Works
  - Adani Cement Ltd
- 

## **LIST OF THE PROJECT COMPLETED**

S. No.	Description	Cap. Of The Plant	Period Of Completion	Value In Cr.
<b>COMPLETED PROJECTS</b>				
1.	J.K.Cement Works Mangrol (A Unit of J.K,Cement Ltd.) Village Mangrol, Dist.Chittorgarh (Raj.)Complete Electrical & Instrumentation Work	2000 tpd	2000 To March 2002	2.25
2.	Bangur Cement, RAS Dist.Pali (Rajasthan ) Unit no. IV LT & Instrumentation Work	3000 tpd	Mar 2005 To Mar 2006	1.50
3.	Bangur Cement, RAS Dist.Pali (Rajasthan ) Unit no. V LT & Instrumentation Work	3000 tpd	Nov 2006 To Mar 2007	1.50
4.	Bangur Cement Khushkheda Grinding Unit-Dist.Alwar (Raj.) LT ,HT & Instrumentation Work	2 x 5000 tpd	Apr 2006 To Jan 2007	2.50
5.	Bangur Cement, RAS Dist.Pali (Rajasthan ) Unit no. VI LT & Instrumentation Work	3000 tpd	Sep 2007 To Mar 2008	1.50
6.	Bangur Cement, RAS Dist.Pali (Rajasthan ) Unit no. VII LT & Instrumentation Work	3000 tpd	Oct 2008 To Mar 2009	1.50
7.	Aditya Cement Works – Unit I (Unit of Grasim Group ) Sawa –Shambhupura,Dist.Chittorgarh(Raj)	5000 tpd	1998 To 1999	1.00
8.	J.K Cement Works Muddapur Dist. Bagalkot ( Karnataka ) Comlete Elec. & Inst.Work	6500 tpd	Apr 2008 To be Completed by Oct 2009	7.00
9.	Suratgarh Grinding Unit ( Unit of Shree Cement Ltd.) Suratgarh (Rajasthan)	5000 tpd	Aug 2009 To be Completed by Jan 2010	1.50
10.	Waste Heat Recovery Power Plant ( Unit of Shree Cement Ltd.) Bangur Cement, Ras Dist.Pali (Raj.)	25 x 2 MW	Sep 2009 To be Completed by Mar 2010	1.10
11.	Roorkee Grinding Unit ( Unit of Shree Cement Ltd. ) Roorkee ( U.K. )	5000 tpd	Oct 2009 To be Completed by Mar 2010	1.50
12.	Bangur Cement, RAS Dist.Pali (Rajasthan) Unit no. VIII Complete Plant E.& I Work.	3000 tpd	Sep 2010	2.50



13.	Jhobner Grinding Unit (Shree Cement Ltd.) Jaipur	5000 tpd	Jan 2011	1.50
14.	Roorkee Grinding Unit with Roller press ( Unit of Shree Cement Ltd. ) Roorkee ( U.K. )	3000 tpd	Jan 2011	1.50
15.	Slag mill J.K Cement Works Muddapur Dist. Bagalkot ( Kar. )	5000 tpd	Apr. 2012	1.25
16.	Bangur Cement, RAS Dist.Pali (Rajasthan) Unit no. IX Complete Plant E.& I Work.	4500 TPD	OCT. 2013	3.00
17.	ABG Cement, Kutch, Gujarat (Only Instrumentation Work Without Grinding Unit)	7500 tpd	June. 2013	3.00
18.	M/s. Grasim Industries Ltd., Bharuch, 2 x 32 MW CPP Project Through M/s. Thermax Instrumentation Ltd. (Only Part Work of Instrumentation)	-----	Aug. 2013	0.75
19.	M/s. Thermax Instrumentation Ltd. 1 x 25 MW Mangrol Dist : Chittorgarh (Raj.) (Only Part Work of Instrumentation)	-----	July. 2014	0.75

S. No.	Description	Cap. Of The Plant	Value In Cr.
1.	M/s. Shree Cement Ltd., Ras, Complete E&I Project Work of Ballmill and Packing Plant at RNCU.	4500 tpd	1.25
2.	M/s. Mangalam Cement Ltd., Morak Dist: Kota, Cement Grinding Unit E & I Work.	2500 tpd	1.75
3.	M/s. Shree Cement Ltd., Raipur, Complete E&I Project Work.	6000 tpd	5.65
4.	M/s. J.K. Cement Works, Mangrol Dist Chittorgarh Complete E&I and lighting Project work of Cement Grinding and Wagon Trippler Work	5000 tpd	2.50

S. No.	Description	Cap. Of The Plant	Value In Cr.
1.	M/s. Shree Cement Ltd., Ras, Complete E&I Project Work of Grinding unit (RNCU). <b>Work Started April 2014 To Aug. 2014</b>	4500 tpd	1.75
2.	M/s. Shree Cement Ltd., Ras, Complete E&I Project Work of Unit X. <b>Work Started Nov. 2013 To June. 2014</b>	4500 tpd	4.25
3.	M/s. Mangalam Cement Ltd., Morak Dist: Kota, Plant Up gradation E & I Work of Cement Project <b>Work Started April 2013 To July. 2014</b>	5000 tpd	3.00
4.	M/s. J.K. Cement Works, Mangrol Dist Chittorgarh Complete E&I and lighting Project work <b>Work Started Sep. 2013 To July. 2014</b>	5000 tpd	7.15
5.	M/s. J.K. Cement Works, Jharli Dist Jhajjar Complete E&I and Lighting Project work of Grinding Unit <b>Work Started Sep. 2013 To June 2014</b>	3000 tpd	1.75
6.	M/s. Shree Cement Ltd., Bihar, Complete E&I Project Work of Grinding Unit <b>Work Started Oct. 2013 To June. 2014</b>	4500 tpd	2.00

## LIST OF THE PROJECT GOING-ON

S. No.	Description	Cap. Of The Plant	Value In Cr.
1.	M/s. Shree cement Ltd ,Nawalgharh Gothra, Nawalgarh, Jhunjhunu	13500 tpd	11.13
2.	M/s. Shree Cement Ltd., Guntur , Andhra Pradesh	2500 tpd	10.42
3.	M/S. Shree cement Ltd Purliya Digha and Parbatpur Purulia West Bengal	5000 tpd	4.40
4.	M/s. Ultratech Cement Ltd (Unit –Pali cement works) Balara Jaitaran ,Pali	8000 tpd	16.96
5.	M/s. Ultratech Cement Ltd (Unit –Cuttak Cement Works) Radhakishorepur Dist Cuttak Odisha	4500 tpd	6.90
6.	<i>M/s. UltraTech Cement Limited (Unit- Patliputra Cement Works)Vill: Shajahnapur, Sigariya A Wan Station Near Dhaniyaw Patna.</i>		5.40
7.	Udaipur Cement Works ,Shripatinagar Dabok,Udaipur		5.25

**LIST OF THE MAINTENANCE GOING-ON**

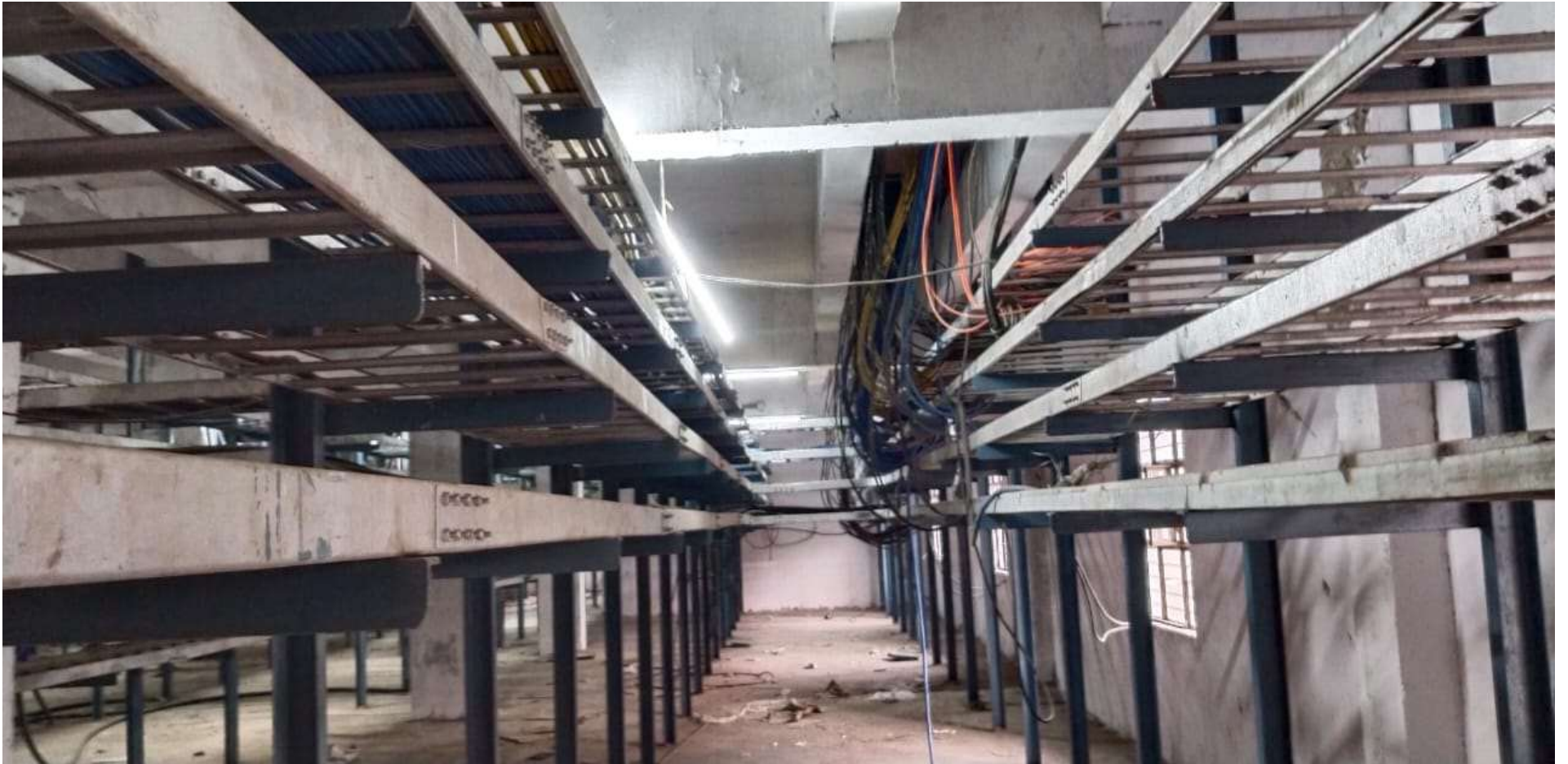
<b>S. No.</b>	<b>Description</b>	<b>Cap. Of The Plant</b>
1.	M/s. Wonder Cement Ltd., Nimbahera Dist : Chittorgarh, Complete Electrical & Instrumentation Work	6500 tpd
2.	M/s. J. K. Cement Works Nimbahera (A unit of J. K. Cement Ltd.) Nimbahera, Dist. Chittorgarh (Raj.)	5000 tpd
3.	M/s. J. K. Cement Works Mangrol (Old Plant) (A Unit of J. K, Cement Ltd.) Village Mangrol, Dist. Chittorgarh (Raj.) Complete Electrical & Instrumentation Work	2000 tpd
4.	M/s. J. K. Cement Works Mangrol (New Plant) (A Unit of J. K, Cement Ltd.) Village Mangrol, Dist. Chittorgarh (Raj.) Complete Electrical & Instrumentation Work	5000 tpd
5.	M/s. J. K. Cement Works Muddapur (A Unit of J. K. Cement Ltd.) Village Muddapur, Mudhol, Dist. Bagalkot (Kar.) Complete Electrical & Instrumentation Work	6500 tpd

# Project portfolio

## LC-02 PANNEL ROOM



# CABLE CELLAR WORK



# LC-02 DISTRIBUTION TRANSFORMER INSTALLATION WORK







# LC-02 TO BAG HOUSE AND BRU ROUTE WORK



# BRU ROUTE CABLE TRAY WORK







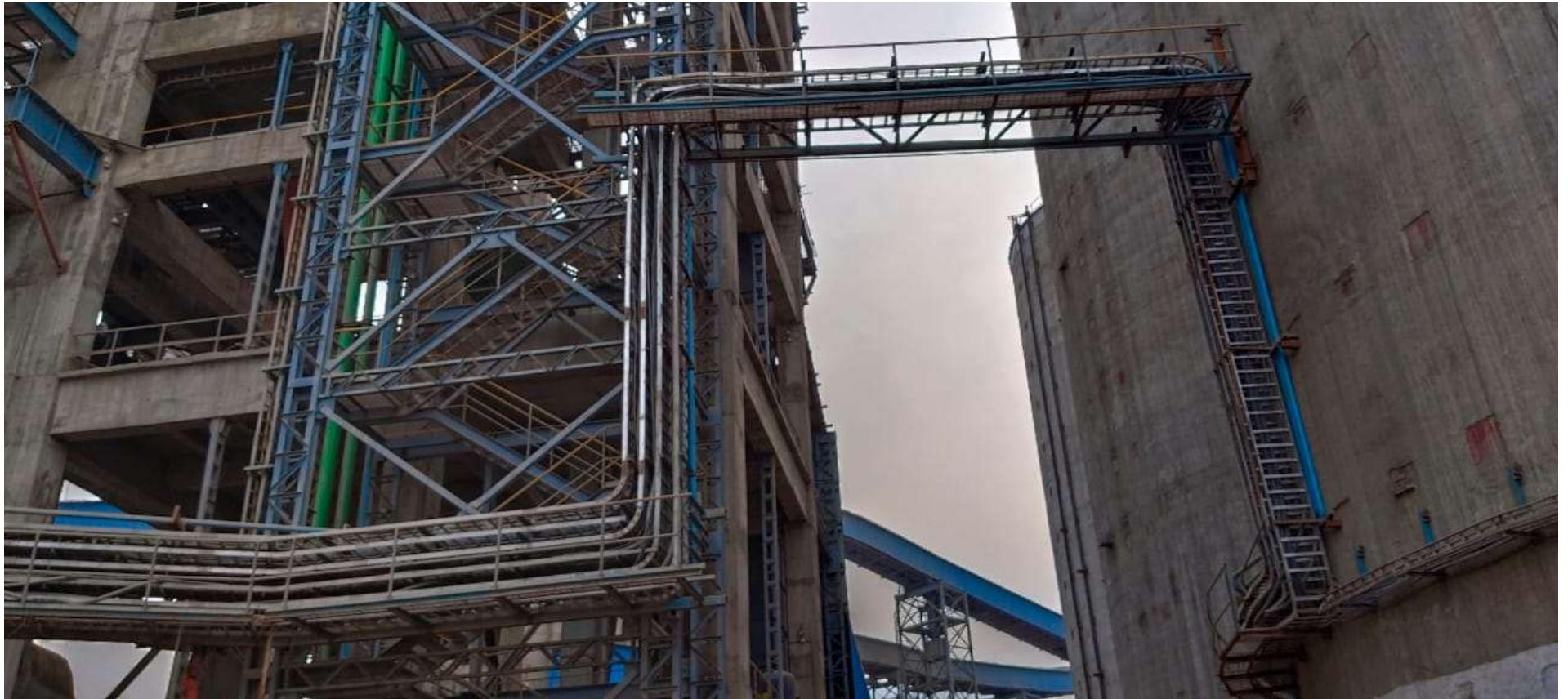
# LC-02 TO BAG HOUSE ROUTE WORK



# BAG HOUSE RISER CABLE TRAY WORK



# MAIN ROUTE TO CEMENT SILO CONNECTIVITY CABLE TRAY WORK





# JB FIXING AND CABLE TERMINATION WORK



# PACKING PLANT LOAD CENTRE AND CABLE TRAY WORK



# TRUCK LOADING WORK



## Turnover of Last Three Financial Year

S.NO.	Assement Year	Financial Year	Turn Over (IN Cr.)
1	2021-22	2020-21	17.27
2	2022-23	2021-22	27.67
3	2023-24	2022-23	34.75

**Thank You**

